

Table of Contents

P3	Executive Summary
P4	Long term aspirational vision statements
P5-8	Task Force recommendations
P9	Annex 1 Geographical boundaries of Luggate
P10-12	Annex 2 Community survey results
P13	Annex 3 Luggate strengths, weaknesses, opportunities and threats analysis
P14-15	Annex 4 Notes of task force ‘town planning’ session
P16-17	Annex 5 Luggate baseline information 2024
P18-40	Annex 6 Report of Luggate Community Visioning Workshops August 2023



Executive Summary

Over the last 10 months, Shaping our Future have worked in collaboration with the Luggate Community Association to produce an updated community plan/vision. Their existing plan dated from 2002. As the community is growing rapidly it is timely to capture an updated vision for the future of the town.

In July 2023 two facilitated public workshops were held and over 100 residents attended. A report of the visioning workshops was produced and this is attached below as Annex 6.

Following the workshops a working group (also known as a Task Force in Shaping our Future speak) of around 10 volunteers met every 3-4 weeks to consider the findings of the public workshops in order to produce a community vision statement and a series of actions to help deliver the vision.

There is very little accessible data relating to the Luggate Community. In fact there is no agreed boundary as to what counts as Luggate. What is suggested is shown at Annex 1. Some properties are rated under Hawea, some have Cromwell postal codes, Luggate is linked to Queensbury for Civil Defense purposes. Population data is very out of date. Baseline information that the group have established about Luggate is at Annex 5.

The task force produced a community survey, the results of which are at Annex 2.

As part of their work, the task force undertook a strengths, weaknesses, opportunities & threats analysis of Luggate. This is below at Annex 3.

One task force session involved a whole of town planning approach, using large scale aerial images to identify what could happen where. The notes of this are at Annex 4. SoF Executive Officer, John Glover met with Murray Frost, local developer and owner of the Flour Mill site to gather his thoughts on likely /potential development outcomes on his land.

The task force have drawn up a mission statement and aspirational vision statement for Luggate and a series of recommendations for action intended to deliver the vision. The recommendations relate to Water Infrastructure, Community, the State Highway corridor, Reserves, Shops & Services, Tracks & Trails, Environment & Biodiversity and Heritage.

These were presented at public meetings in March 2024 for community feedback and a few minor additions/alterations were made

The participants in the task force meetings were: Rod Anderson, Pete Spencer-bower, Danielle McNaughton, Daegal Schmidt, Lorna Schmidt, Emily Schmidt, Mike Radley, Jan Piggot, Chris Saunders, Arda Booman, Nikki Linwood, Sarah Bartholomew. John Glover, Executive Officer for Shaping our Future acted as secretariat to the task force.

The Future of Luggate - Long term aspirational vision statements

Mission Statement:

By 2050, Luggate will be a vibrant, safe, and connected community. Environmentally driven, supported by well-planned and future-proofed infrastructure.

Vision Statement:

By 2050, Luggate will become an attractive, well-maintained and thriving small-town community. It will remain a safe place, with common shared values and a sense of belonging.

Forward thinking and a whole-of-town planning approach will deliver a family-friendly neighbourhood. Walking and cycling tracks will be connected across town; with shops, commercial, preschool, and co-working spaces centred around the historic flour mill and nature reserves that provide a broad range of sporting and recreational activities.

Through planting and traffic management, we will make the main highway feel more like a main residential road that's connected to the aesthetic of the small town. It will be a pleasant road to travel on/through and a safe space for pedestrians and cyclists to be (Cardona is a reference point). Equally, we will resolve the ongoing issues with water, wastewater, and telecommunications infrastructure, enabling both residential and business growth in the area.

Biodiversity and the environment remain valued and we continue to make enhancements in areas such as pest control, maintaining water and air quality and cherishing the local swimming spots in the river and creek.

Finally, Luggate will be more connected to its backyard and towns, through the establishment of access, preservation, and interpretation of heritage features in the area along with walking and cycling access to the Pisa Range, cycle connectivity and public transport links to both Cromwell and Wanaka.

Luggate task force recommendations

Water infrastructure

Outcome: Luggate water infrastructure is sufficient to enable the community to prosper.

Recommendations

1. The LCA meet urgently with QLDC Councillors and senior leadership team members to explain the impacts of the current water supply restrictions and provide a compelling case for Councillors to bring the water scheme forward in the next LTP. The discussion should address what could enable the planned upgrades to be delivered 'sooner' and if appropriate, 'cheaper'. Eg could developers frontload development contributions to fund the scheme; could the scheme upgrades be staged; are there any 'off balance sheet' funding options available.
2. The LCA ask QLDC to set out their plan to manage the wastewater arising from development of land that is currently zoned for residential use and to enable more wastewater reticulation to be provided to existing residential properties.
3. The LCA ask QLDC to confirm that any new stormwater management infrastructure that will be built takes the changing climate into account and to consider a review of the adequacy of the existing infrastructure.
4. The LCA ask QLDC to consider the adequacy of flood/storm water flows across the lower Luggate area.

Community

Outcome: Luggate has an inclusive, engaged and strong community with a safe, small-town feel, common shared values and a sense of belonging.

Recommendations (led by the LCA)

5. A Luggate town logo and 'strapline' are designed and adopted for use by community groups and businesses.
6. A community website is developed to hold information about Luggate, shops, services, facilities, history, events, community news, links to environmental data, volunteer groups, tracks, trails etc.
7. A welcome pack for new residents is produced containing useful information about the area, services etc and opportunities to get involved in community life.
8. Identify opportunities for additional community events – markets, music, sports days, etc and add these to the calendar of community events.
9. Explore level of interest in the community to establish a community garden.
10. The LCA publicise volunteering opportunities – planting/weed & pest control/fire team/community association/sports coaching/mentoring/tracks & trail building.
11. There is always at least one community group or project for which the community is fundraising for at any given time.
12. Promote the area agreed as defining 'Luggate' and explore how rates, post codes etc can be aligned with this.

State highway corridor through Luggate

Outcome: As it passes through Luggate, the State Highway feels more like a main residential road connected to the aesthetic of an attractive small town and is safer for pedestrians and cyclists.

Recommendations

13. The LCA establish a working group to hold quarterly meetings with local NZTA staff/contractors with the stated purpose of developing a road corridor landscape/ traffic management plan for Luggate. Include school bus/toilet/car park areas opposite the hotel, speed limits, street furniture, attractive planting scheme, engine braking and family friendly access alongside the road within the road reserve.
14. Discuss with NZTA plans for maintenance of the red Bridge and also explore options for 'clip on' foot/bike path to enable safe access across the river.
15. The LCA make submissions to secure funding needed to implement the plan.
16. The group meet with QLDC roading staff to understand the role (if any) of QLDC in relation to the state highway road reserve and make submissions to QLDC annual and long term plans as appropriate.

Reserves

Outcome: the reserves across Luggate provide for a wide range of sporting and recreational activities.

Recommendations

17. The LCA assemble a working group of community members, including youth, to review the findings of the community visioning workshops and task force and:
 - (i) Produce a master list of the recreational facilities that should be provided to support the health and wellbeing of the community as it grows over the next 20 years.
 - (ii) Develop and secure community agreement for plans for the different reserves across Luggate identifying what should happen where.
 - (iii) Engage with the community to agree what the preferred order of priorities should be for new facilities.
 - (iv) Work with the local QLDC parks & rec team to progress projects within annual and long-term plans.
 - (v) Explore funding options and collaboration with other groups/stakeholders to progress priorities.
 - (vi) Establish who owns Kingan Road reserve

Shops and services

Outcome: Shops and services in Luggate reduce the need to travel and provide a natural point of focus for community connection.

Recommendations

18. The LCA draw up a list of the types of shops, services & business facilities that the community would like to see operating in Luggate.
19. The LCA engage with local businesses, commercial land owners and developers to identify infrastructure and district plan barriers that stand in the way of the delivery of shops/services and advocate on their behalf as appropriate.
20. Explore level of support for provision of a co-working /study facility.
21. QLDC are requested to review the arrangements for checking the availability of and booking the community hall in order to foster greater use of the facility by community groups.
22. LCA to meet with the appropriate ORC staff to understand what public transport options serving Luggate might be under consideration and the constraints around population numbers that currently preclude any service.

Tracks and trails

Outcome: a network of walking tracks and bike trails provides safe and convenient connectivity across Luggate, along the creek, to neighbouring communities and to the high country.

Recommendations

23. The LCA establish a trails working group to:
 - i. Produce a map depicting the long-term plan for the track/ trail network across the town, to Wanaka and Cromwell and to the Pisa Range high country.
 - ii. Prioritise projects.
 - iii. Identify fundraising options and opportunities to collaborate with other groups/ stakeholders /landowners to progress projects.
 - iv. Explore how best to rationalise/secure access along Luggate Creek.
 - v. Work with the local QLDC parks & rec team to influence Councils annual and long term plans.
 - vi. Collaborate with trapping groups to ensure new tracks/trails to also provide access for predator control.

Environment & biodiversity

Outcome: Air & water quality are maintained, pests are controlled, biodiversity is valued and improved; solar generation is supported.

Recommendations

24. The LCA advocate for more areas of Luggate to be serviced by wastewater reticulation.
25. The ORC local catchment officer is asked to provide 6 monthly “state of the environment” reports to the Luggate community - these could cover water flows, river and creek water quality, aquifer health, air quality, biodiversity and landscape reporting, pest management plans.
26. The LCA engage with Southern Lakes Sanctuary to explore options to support local predator control activities.
27. The LCA request that QLDC act to maintain the quality of the Dark Sky over Luggate by ensuring new development has appropriate lighting control conditions applied.
28. The LCA advocate for actions to support solar generation in the town when appropriate. QLDC take impacts of shading into account in planning and tree planting policies.

Heritage features

Outcome: Heritage features in and around Luggate are protected and preserved, are accessible, and provided with on-site information and interpretation.

Recommendations

29. The LCA lead in the establishment of a Luggate heritage group to:
 - (i) Produce an inventory /description of heritage features in the Luggate area.
 - (ii) Produce a prioritised list of heritage features for preservation/restoration as appropriate.
 - (iii) Work with landowners to enable public access to the features.
 - (iv) Seek funding from the QLDC Heritage Incentive fund for interpretation signage at features.
 - (v) Develop a Luggate Heritage Trail around the town.
 - (vi) Undertake or support fundraising activities to preserve heritage features.
 - (vii) Approach the owners of the Luggate Hotel to see if any old photographs can be copied or given to the community for display.

Annex 1 – geographical boundaries of Luggate

When describing the extent of the Luggate community, most agreed that to the west it ended at Stevenson Road and at the east it was the boundary with CODC. The Pisa ranges to the south provide an upland boundary. The river to the north would seem a logical boundary but the quarries on the far side are known as the Luggate quarries and the boundary with Hawea Flat is at the junction of Kane & Mckay road.



Annex 2 Community survey responses - 98 RESPONDENTS

Summary of survey findings

1. 98 responses received which relate to 262 residents
2. Most properties connected to town water supply.
3. @ 50/50 split connected to town wastewater vs onsite septic tank.
4. 14% consider internet service inadequate for needs.
5. 20% consider cellphone service inadequate for needs.
6. 93% of respondents' homes in full time use.
7. 39 respondents either work from home or have home based business.
8. Over 40 people would potentially use a co-working/communal office/study space in Luggate
9. The respondents indicated 30 pre-school age children and 34 school age children.

Which of the following service the property?

ANSWER CHOICES	RESPONSES
▼ Mains Water	87.76% 86
▼ Roof/Bore Water	8.16% 8
▼ Mains Sewer	38.78% 38
▼ Onsite Septic System	44.90% 44
Total Respondents: 98	

Do you consider the internet services available as adequate for the needs of the occupants of your home?

ANSWER CHOICES	RESPONSES
▼ Yes	85.71% 84
▼ No	14.29% 14
TOTAL	98

Do you consider the available cellphone services as adequate for the needs of the occupants of your home?

ANSWER CHOICES	RESPONSES
Yes	79.59% 78
No	20.41% 20
TOTAL	98

Is the house in full time occupation (ie not a holiday home)?

ANSWER CHOICES	RESPONSES
Yes	93.75% 90
No	6.25% 6
TOTAL	96

How many people live in the home?

Noone	1 person	2 persons	3 persons	4 persons	5 persons	6 persons
2	5	39	18	26	3	1

Please enter the number of people living in the home per age bracket

ANSWER CHOICES	AVERAGE NUMBER	TOTAL NUMBER	RESPONSES
Pre school age	Responses 1	30	34
School age	Responses 1	34	29
18 - 30	Responses 1	17	18
31 - 45	Responses 2	101	56
46 - 60	Responses 1	36	30
61+	Responses 2	54	34
Total Respondents: 96			

How many people in your home are employed/self employed?

None	1 person	2 persons	3 persons	4 persons
11	14	60	6	5

Of those working, where do they work from?

ANSWER CHOICES	RESPONSES
▼ Work from home	29.21% 26
▼ Home based business	14.61% 13
▼ Workplace/Employer in Luggate	7.87% 7
▼ Workplace/Employer in Wanaka	78.65% 70
▼ Workplace/Employer in Cromwell	3.37% 3
▼ Other (please specify) Responses	23.60% 21
Total Respondents: 89	

Other:

Cardrona	Queenstown/ Frankton	Hawea	Australia/Overseas	Clyde	Alexandra	Regional
1	6	1	3	1	2	2

If there was a co-working /communal office / study space in Luggate, how many people in your home might potentially use this type of facility?

None	1 person	2 persons	3 persons	4 persons	5 persons	6 persons
62	20	6	1	1		

Annex 3 - Luggate SWOT analysis – done by Luggate task force group

Strengths

- Location
- Community & Connection
- Water access/river trails
- Hall
- New Petrol Station
- Wanaka airport
- Industrial area
- Environment

Weaknesses

- Hall booking system & cost
- Slow progress of playground
- Water supply (restrictions/quality)
- Red Bridge (amount of fixing it requires)
- Airport (Wanaka)
- Public transport
- Road safety - speed, pavements
- Lack of funding
- Local (Wanaka) perception

Opportunities

- Better use of hall
- Pub & general store
- Precinct (flour mill) – wine bar, café etc
- Growth/development
- New NB/pump track
- Cromwell walking track linked
- School/education/day care
- Community garden
- Airport (Wanaka) & Tarras
- Luggate Creek restorations (run off from MacKay Stn)
- Bus – Cromwell, Luggate, Wanaka
- Urban Cycle Lane
- Mechanic/WOf facilities/petrol station
- Cohesive design, centralised area, village centre
- Road safety, speed, pavements, footpaths
- Sports facilities,
- Area for tiny houses done well
- Luggate creek path on both sides
- Video the process & progress. Turn into content

Threats

- Growth (for some people)
- Rabbits
- External politics, change of government
- Globalisation, lack of power, over-regulation
- QLDC

Annex 4 – notes of task force “town planning” session

State Highway

Speed reduced to 40 through the town
Stop sign on Shortcut road where it joins highway
Pedestrian crossing by hotel/gen store
Pedestrian crossing by transport yard (for safe access to redeveloped site)
Safe walkway/footpath/pavement along at least one side of the highway from Church Road to path from Cooper Crescent

Tracks & trails

Walking access Luggate Creek upstream of highway bridge to old farm bridge site then down through new reserve to tennis court site/ though old transport yard to highway
Bridge across Luggate Creek from Alice Burn Drive to back of fire station to provide walking access to redeveloped transport yard
New track from Church Road (by transport repairs) along edge of Council land down to the river
Walking access either side of Luggate creek downstream of the highway with footbridge not far from end of Harris Place.
Heritage trail up Luggate Creek to old gold mining relics/sites
Long distance bike trail from end Kingan Road to Snow Farm on Pisa Range.

Formalise land ownership of land used for Luggate Creek walking track to north of Jackson Rise/access to Woody’s gate.

Fire station site

Add medical room for visiting Doctor, Nurse or other practitioner (eg physio) to work out of, future St John

Old transport yard/flour mill site

Keep “Reid’s Wall”	Style like old Cromwell	
Bike repair shop	Food trucks	
Ice cream/speciality shops	Boutique cinema	
Office/business space	Nice bar & craft brewery	
Market place w weekly markets	Convenient store (general store)	Restaurant



Future stages of Luggate Park subdivision

- High density housing
- Retirement village
- Visitor accommodation
- Potential primary school/sports field
- Botanical gardens
- Tiny house village

Reserves

New reserve at back of cricket ground

- Skatepark
- Tennis Court – suited for basketball/netball

Cricket ground

- Designate for emergency helipad
- Move permanent campers away from playground
- Safe walking path off highway

Memorial Hall area

- Restore playground
- Community garden/planter boxes

Toilets/school bus and parking area by highway

- Re-design parking to make it organised and safer to see to cross the road.
- Make better use of rest of space. Landscape.
- Potentially community garden could use some of this.



Jackson Rise – land to south and east bounding Alice Burn

- Pump track/skills park
- Use hill for mini downhill track
- Off lead dog area
- Consider potential land exchange of part of this to formalise land use by Luggate Creek track north of Jackson Rise

Annex 5 Luggate baseline information

The information below describes what we know about Luggate in 2024. It will help those in the future to understand the context of the report, vision and recommendations.

Population – estimate @600 people

Number of houses built - @270 dwellings

Plan enabled development capacity @ additional 480 dwellings

Number of pre-school age children - @30

Number of primary school age children - @40-50 Some attend Hawea Flat school, some Holy Family primary Wanaka, some Wanaka Primary and others attend Te Kura O take Karara.

Number of high school age children 40-50 depending on what is viewed as 'Luggate'

Known businesses/employers located in Luggate: Upper Clutha Transport; Luggate Logging; Sawmill, Powder Coating business, Central Trusses, Aviation storage, Agricultural contractors, a mechanic, catering company, 2 architects, Construction company, Florist, Hairdresser, Dr Bas tool and equipment, Jo dirt gardening, 1 other garden services, 2 bike mechanics, 2 seamstresses. Aircraft manufacture. Wanaka woodcraft (cabinet, joinery etc. -they have a workshop just past the red bridge), Handyman service.

Agricultural land uses: dairy, sheep & beef, bull beef, strawberry farm.

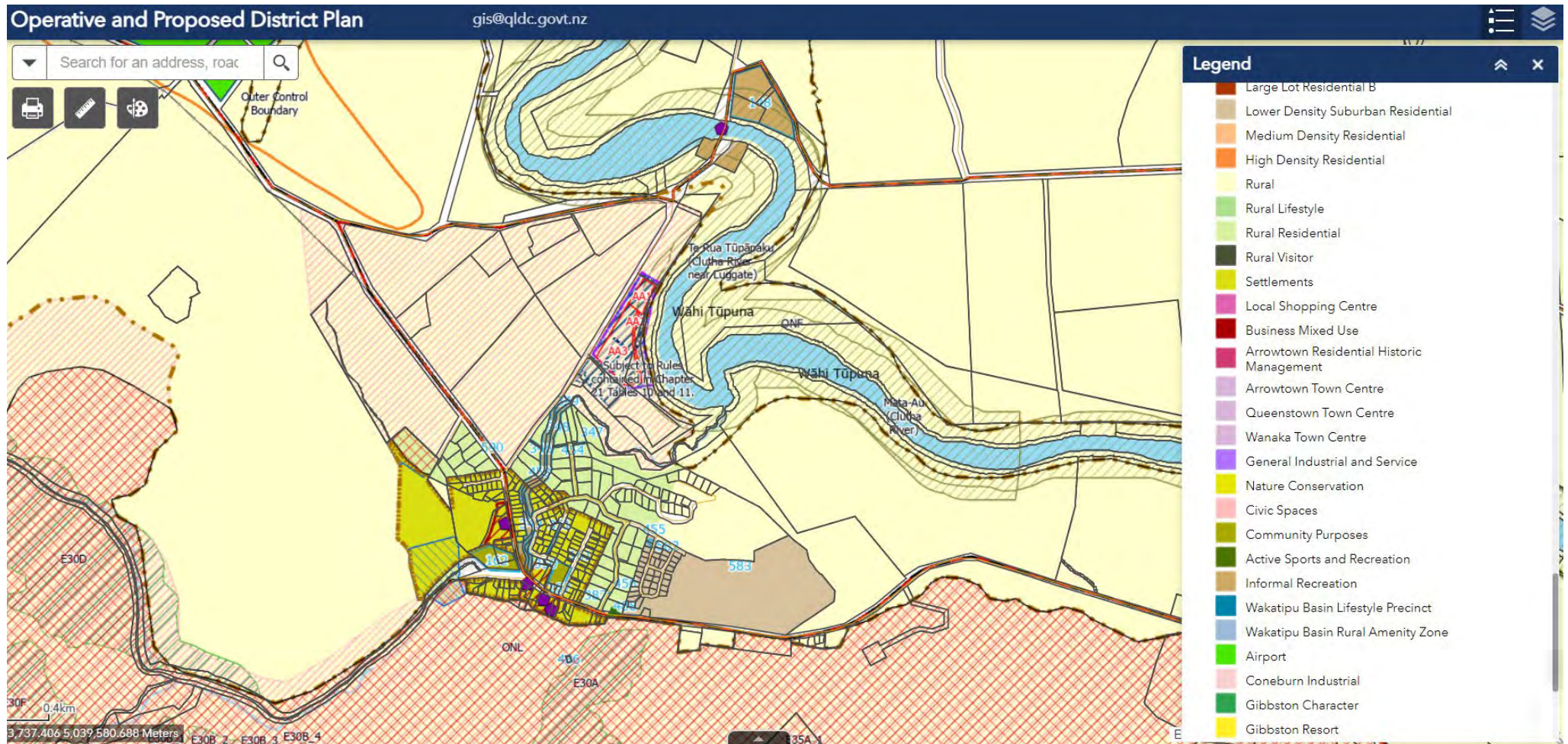
Existing shops/services/visitor accommodation: Luggate Hotel; Luggate general Store; Allied Petroleum 24/7 card fuel

Community facilities: Memorial hall, adjacent playground, cricket ground, fire station, community noticeboard, community pantry, 2 Lilliput libraries, Luggate village Facebook group.

Active community groups: Luggate Community Association, Playgroup, Mhajong, Dance, Cricket, Pilot training, Predator trapping, Track maintenance, planting and plant maintenance, Book club

Water/wastewater: 85% connected to Council water supply, @50% connected to Council wastewater scheme.

QLDC District Plan map for Luggate area 2023



Annex 6 Report of Community Visioning workshops 2023



Luggate Community Visioning

A report by Shaping our Future August 2023



Luggate Community Visioning: report of workshops

Introduction

Shaping our Future (SoF) is a not-for-profit organisation based in the Queenstown Lakes District that works with communities to help them describe and move towards what they see as successful long-term outcomes.

Past experience has shown that when an area is undergoing rapid change/growth, it is timely for a community to take stock of what is important to them and to decide how the future can deliver their aspirations.

The SoF board identified that Luggate was facing significant change and we approached the Luggate Community Association (LCA) in May 2023 to discuss updating their community vision, which dated from 2003. The LCA agreed to collaborate with SoF to do this.

Two, two-hour workshops were held at the Luggate Memorial Hall – the first was the evening of Thursday 13th July 2023 and the second was the morning of Sunday 16th July 2023

The events were widely promoted on relevant social media pages/groups, reported in local media and members of the LCA hand delivered 300 promotional flyers for the sessions to all mailboxes in the vicinity.

54 people attended the first workshop and 49 the second. There was a wide range of ages represented across the two events.

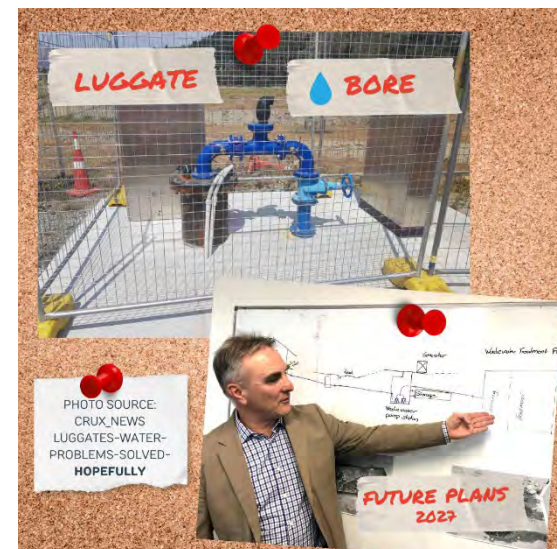
The workshops were facilitated by John Glover, Exec officer SoF, and supported by members of the SoF Board and the LCA.

In particular, SoF would like to thank Rod Anderson for bringing the workshops to fruition.



Image left – Luggate community workshop

Image right – social media teaser



Workshop outline and outputs

On arrival at the workshops, participants were asked to answer two questions and the answers were used to form word clouds. The bigger the word, the more frequently it was mentioned: -

Q1: What one word describes the biggest issue facing Luggate right now?



Q2: What one word describes long term success for Luggate?



Activity: Hot topics and current issues

The first session of each workshop was a facilitated discussion of what's on everyone's mind. Participants were asked to offload and capture the burning issues using the paper on the tables to record topics and comments. This was followed by a report back – with each table reporting their top 3 issues which were summarised on a flip chart.

Below are the key issues that were captured. A transcription of all of the comments is at Appendix 1.

Wairarapa

Big Issues

Access to PISA range
WATER trades
Water
Rabbits Sewage Lack of water
Teen Facilities (Development)
No Village Centre Bore
P. Transport Tree policy Silverlight
Greenspaces Streetscapes on main street
Dog poo bags Town planning. Resect and hub.
Cycle track up the hill was promised.
Water supply that was promised
SH6 alternate route
Schooling – local at Lyggate / Flat

SAFETY @ ROADS Speed management
Town Centre
SOLAR CENTRE

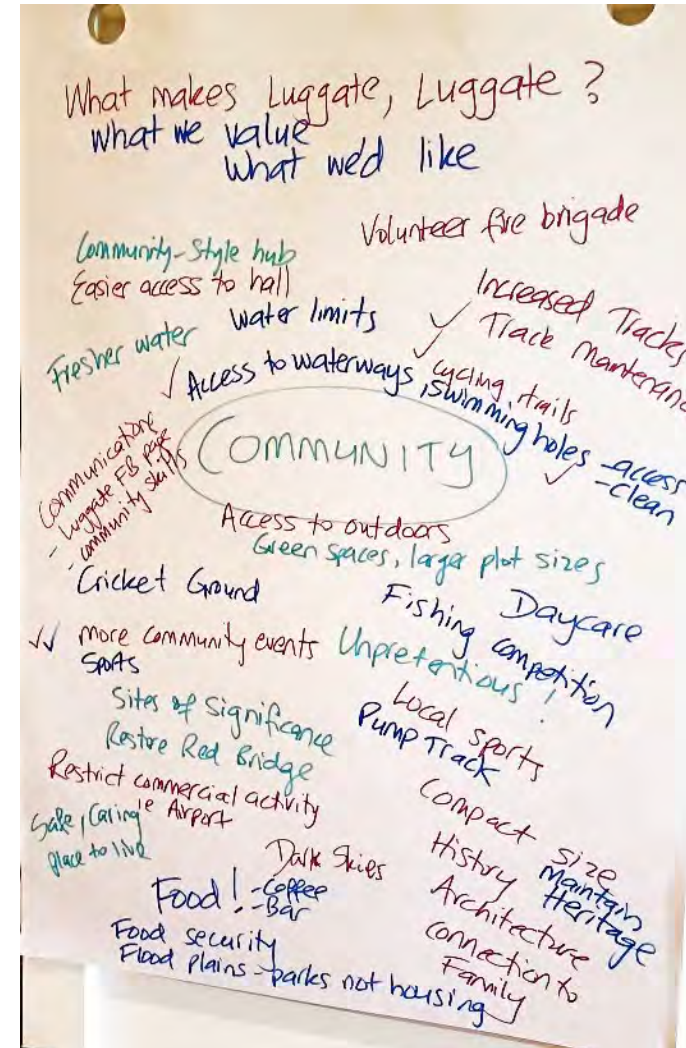
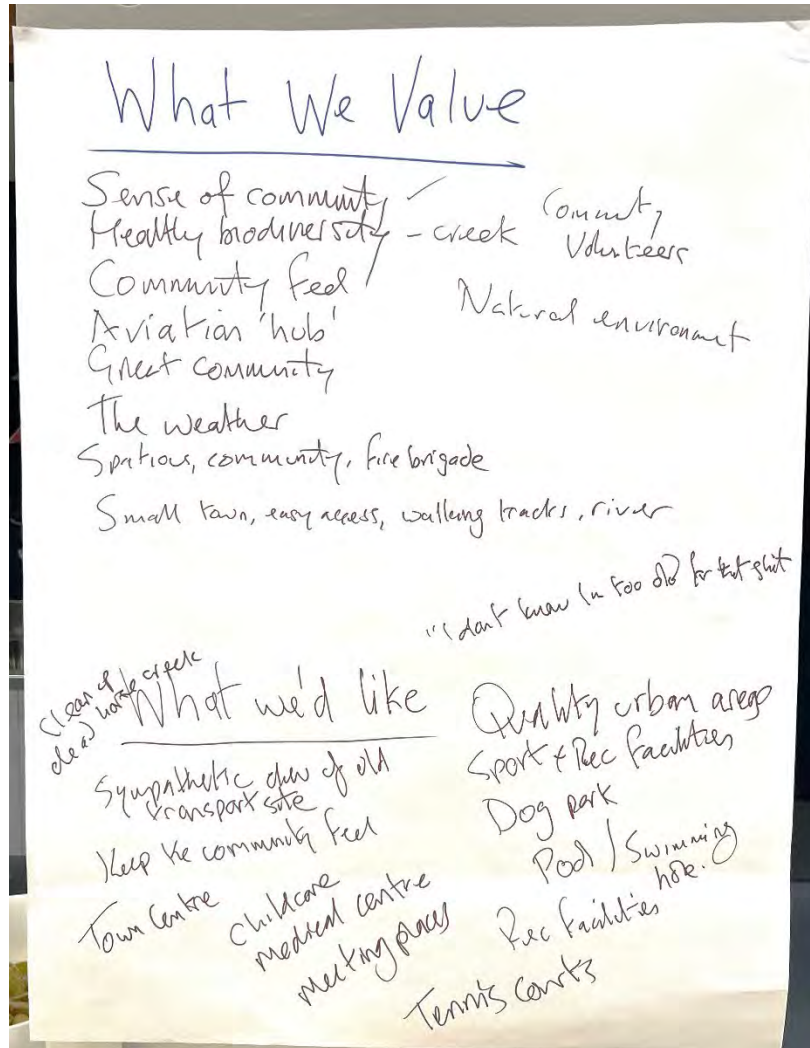
Big Issues of today

Public transport to Wairarapa Urban Spread
Recreational facilities for kids
Good coffee shop Development - keep local features, names & history
Growth without sufficient infrastructure
Danger of main road Schools - choice transport to schools
Better awareness landscape / country atmosphere
Water supply & Sewage
Roading / School bus stopping - Inst. Shuttle to Wairarapa
Monitoring pollution of waterways
Community centre (not the hall) - social hub
Drinking water, dairying Pest control
Public transport / cycle trail - Rabbits - Ferrets
Airport development Red Bridge weight limit
Water restrictions, developers
Sewage Consistent lighting / Dark Sky
Sports Facilities Fewer volunteers
Water, safe supply
Road traffic increase on main road
Preserving iconic features, green spaces

Climate change, fire risk considerations

Activity: Describing what we value

Participants were asked to think about Luggate's aspirational values. What does Luggate represent to you? What makes it unique? What is it that's key to protect as change happens and what is it that we value that's not here now that we'd like to see – whats missing? The flipcharts below capture the key words reported back from participants. A full transcription of all of the words used is at Appendix 2 & 3.



A vibrant village	An attractive and welcoming place to be	The place to be	A thriving, friendly active place for local residents & visitors with a significant point of difference (mill, red bridge, airport)
Fun x3	Unrecognisable unless village boundaries are set	Thriving x4	Pumping
Vibrant x3	Small	Safe x3	Still standalone from Wanaka x3
Larger with planned expansion	Beautiful/Attractive x4	Lively	An active young community association
A buzzing rural town	I was born 1950. If I'm here in 205 I want a party	Family friendly x10	Healthy/Great community x7
A big town x2	Public transport to/from Luggate x2	A talked about community in a good way x2	Inviting
Self-sufficient x5	Community gardens x2	Still a small town x5	Still a great place
Sustainably functioning x2	A real destination x2	Too large	Preserving heritage x2
Rabbit free x5	No more than 5000 people	Amenities to justify rates	Progressive
Holiday destination x2	Clean air & water x5	Visually loved & harmonious	A highly desirable place to live
Under concrete	Affordable	Service town for Wanaka & airport	Under CODC
Cleaner creek	Productive x2	Full of tiny houses & apartments	Still short of water & the council will still be saying "this is the first they've heard of it"
Still too expensive for me to buy a house	Finally getting water storage	Well organised infrastructure (recycling, energy, transport)	A popular village shopping area x3
A growing village with balanced infrastructure & local facilities	Functional	Thriving community hub x3	Full of industry
Desirable	Cared for	Rural charm	Green spaces x6
Maintained tracks	An exciting place to be	Bypass for traffic	School x2
Medical facility	Native birds & trees x4	A unique iconic village	Dark sky reserve x2
A place we proudly call home	UCT site – an EV station	Joined to Wanaka x2	Welcoming & inclusive
Sewerage	Controlled growth	Dynamic	Prosperous
Expensive x2	Empowered to make all local decisions	Impersonal	Not a small town vibe
Quiet	The standard other towns want to be	Perfect example of living the dream	Granny will be 100 in 2050
Greater use of alternative energies	Maximising wellbeing		

Vision words – as described by workshop participants to answer the question “in 2050 Luggate will be...:

Activity: The future

This exercise uses humour to illustrate long term success. Attendees are asked to write a humorous newspaper headline that described a long-term successful outcome for the community.

First solar town	Pub changes menu	General store becomes affordable	Old mill makes bread again
Luggate opens geo dome	Woodstock wins national entertainment award	Luggate - kiwi national treasure	2lb nugget found in luggate
Luggate residents recognised for loveliness	Luggate voted best place to live in Upper Clutha	Luggate hotel toilets cleaned	Luggate school hosts international science fair
Gold mine found during Project Pure excavations	Red Bridge finally red	Closure! Luggate rabbit fur textiles factory closes due to no more rabbits within South Island	The Flour Mill wins Restaurant of the Year - Again
Devil's Nook water amusement park opens	Luggate main highway diverted to support Luggate Hospital	The last rabbit served at The Flour Mill award winning restaurant	Luggate voted the most desirable/beautiful/sophisticated/progressive town in NZ
Move over Miami – we want to move to Lugg-gah-tay where the palm trees sway	Luggate: Big little town	Luggate voted best little town in NZ	Where's the most desirable small town in NZ? Lugg-gah-tay
Luggate voted most desirable small town	Largest gold nugget found while building new Red Bridge	First NZ town to become 100% solar – Now sells power to Wanaka	Luggate voted NZ top town 2050
Red Bridge is finally painted red after ... years	Luggate man gives up on council & builds own flying fox	Council appoints review subcommittee for water issues	Luggate Net Zero

Final rabbit eradicated from Luggate	Luggate survives great flood	NZ's first self-sustainable community	Luggate declared friendliest town in Otago
Luggate food forest opens	Luggate creek bridge opens – connecting creek track to highway side	Best bakery in central Otago	Long waiting list for Luggate volunteer FB
UCT goes fully electric	Luggate bypass finally opens	First rabbit seen in decades	Luggate Flour Mill reopens
Sports fields finally open in Luggate	Fires lit at Luggate hotel – community welcomed back	Luggate installs world's longest flying fox	Luggate – the baby booming town
Natural hot springs found in Luggate	Luggate – winner of destination of the year	Little Luggate stays little	Gorilla planting of fruit trees
Luggate Primary School grand opening	Flying Fox back in action at Luggate playground	Community garden opens	Light Rail arrives in Central Otago
Luggate Bike Park hosts BMX world finals	Welcome all to SprinklerFest 2030 – bring your own tarp for sliding	Gondola connects Luggate Heights to Wanaka airport	Michelin Star for Luggate Hotel
Dogs of Wanaka jealous as Luggate pooches learn to collect own poo	Closure of rabbit skin textile factory because of lack of rabbits	Luggate wins NZ most beautiful town	Luggate waterways cleanest in the world
Luggate Red Bridge becomes walk/cycleway after new bridge opens	Ecofriendly school opens in Luggate	Gondola opens to top of Pisa Range	Luggate wins NZ pub of the year
New Luggate research centre develops rabbit birth control	Upper Clutha Transport completes move – Rod retires (maybe)	QLDC allows Luggate Community Centre to be used free of charge for not-for-profit groups	

Activity: Prioritising outcomes

In order to gauge the importance of the issues raised, the last activity was a voting exercise. The key themes & issues facing the community were summarised on a single flip chart and attendees were each given 1 x 3-point, 1 x 2-point and 1 x 1-point post it to vote for their highest priority outcome.

Similar themes were raised at each workshop and the voting results are combined below.

Water supply /wastewater	180
Recreational facilities / reserves	69
Town planning/managed growth	57
Shops/retail/café/'Main St Luggate'	54
Water quality/pollution/creeks/birds	40
Maintaining/strengthen sense of community	37
Pest control / biodiversity	33
Impact of Airport growth /aviation	25
Tracks/access to the river	21
Schooling	19
Good quality housing development	17
Community hub	12
Preserving history/stories/heritage	12
Traffic/road safety	11
Community events	8
Public transport	7
Dark sky reserve	6
Teen youth facilities	4
Maintain low key feel	4
Community safety	3



Images and media coverage

Video footage used to promote the workshops and captured at the events can be found here:-

https://www.instagram.com/reel/CvLmmbMtoAC/?utm_source=ig_web_copy_link&igshid=MzRIODBiNWFIZA==

Links to media coverage of the workshops is here.

<https://wanakaapp.nz/news/news/luggate-community-to-decide-future-priorities?id=6492805bd0e43a0028c36a37>

<https://wanakaapp.nz/news/news/positive-start-to-luggate-community-planning?id=64b61cb43470e0002845f40a>

<https://www.thenews.co.nz/featured/workshops-to-plan-for-future-of-luggate/>

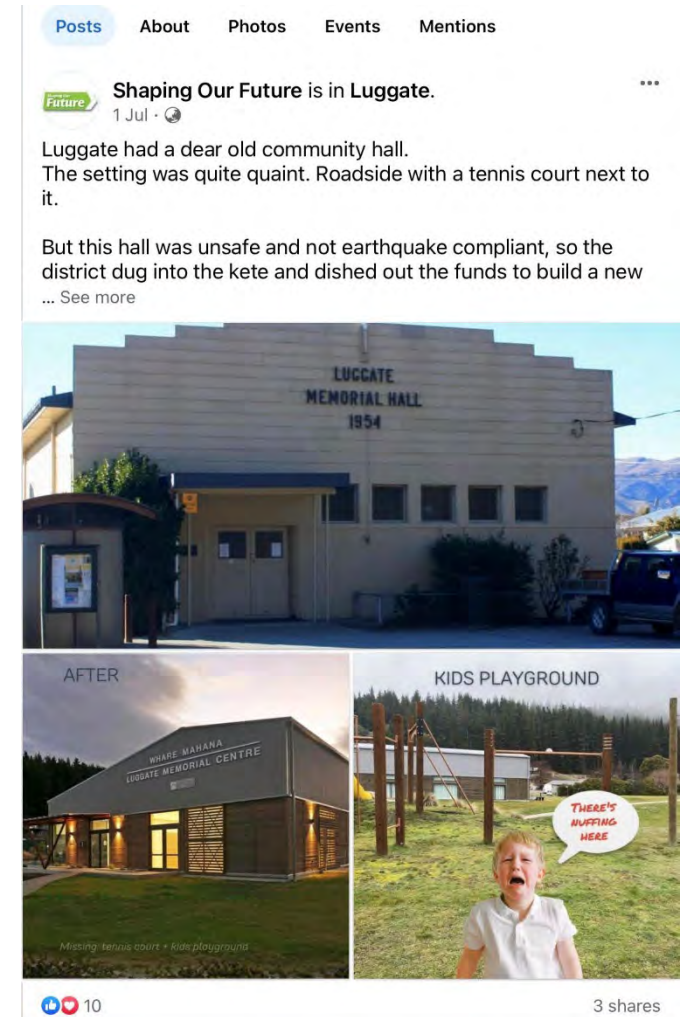
<https://www.odt.co.nz/regions/wanaka/long-term-plan-deal-tick-town%E2%80%99s-population>

Social Media summary

The workshops were promoted on Facebook and Instagram. Mainly still images but a couple of reels. Reach was extended by sharing to local community groups & pages.

Our post about the new hall and loss of the local playground reached over 7800 people.

In all, the total reach of our posts was 21127



APPENDIX 1 LUGGATE BIG ISSUES: TRANSCRIPTION OF FLIPCHARTS

BIG ISSUES - TRANSPORT

PUBLIC TRANSPORT TO WANAKA X3	DANGER OF MAIN ROAD	CHOICE OF TRANSPORT TO SCHOOLS	ROADING/SCHOOL BUS STOPPING - BUS/SHUTTLE TO WANAKA X3	PUBLIC TRANSPORT/CYCLE TRAIL
RED BRIDGE WEIGHT PERMIT	RESURFACE DECKING ON RED BRIDGE	ROAD TRAFFIC INCREASE ON MAIN ROAD	ACCESS TO PISA RANGE X2	NEW RED BRIDGE
CYCLE TRACK UP TO LUGGATE HILL THAT WAS PROMISED X3	SH6 ALTERNATIVE ROUTE	ROAD SAFETY/SPEED MANAGEMENT X2	NO PUBLIC TRANSPORT X3	FOOTPATHS X2
DANGER OF MAIN ROAD - PARKING/PUB	BIKE LANE LUGGATE-WANAKA X5 URBAN/ROADSIDE	PUBLIC TRANSPORT CONNECTION X2	IMPROVED WALKING CONNECTIONS TO THE PARK (FROM COOPER CRES)	SCHOOL BUS STOP SAFETY AT PEAK TIME X 2
SKI STAFF TRANSPORT	TWO LANE RED BRIDGE - SAFE PEDESTRIAN/CYCLE ACCESS ACROSS BRIDGE	INCREASED ROAD TRAFFIC - DANGEROUS, NOISY	LACK OF AFFORDABLE PUBLIC TRANSPORT	MAIN ROAD - UNTIDY. NEEDS A FACELIFT, KERBING, DRAINAGE X2
LINK TO QUEENSBERRY	PUBLIC TRANSPORT TO CROMWELL X2	MANDATORY STOP SIGN FROM SHORTCUT ROAD INTO LUGGATE HIGHWAY AT THE BOTTOM OF LUGGATE HILL	AIR TRAVEL FOR UPPER CLUTHA RESIDENTS LOCALLY - NOT FOR TOURISTS	NEED TO PLAN A REPLACEMENT FOR SH6 THROUGH LUGGATE
RED BRIDGE - MAINTAIN OR REPLACE X3	NEW BRIDGE WITH WALKING/CYCLE PATH	IMPROVE WALKING BRIDGE ACROSS LUGGATE CREEK	CLEARLY SIGNED BUS STOP AT MAIN SCHOOL BUS STOP WITH MORE PARKING	DECREASE SPEED ON OTHER END OF LUUGATE - EAST CROMWELL TO 70/50 X2
COMMUNITY BUS	SLOWER SPEED LIMIT EXTENDED FURTHER OUT OF	MORE BUS STOP SHELTERS	NEW BRIDGE IN PLACE OF RED BRIDGE - SUITABLE FOR	STRAWBERRY FARM

TRANSPORT TO WANAKA	TOWN ON THE WANAKA SIDE X2		CARS	INTERSECTION
---------------------	----------------------------	--	------	--------------

BIG ISSUES - DEVELOPMENT

URBAN SPREAD X2	DEVELOPMENT - KEEP LOCAL FEATURES, NAMES & FACILITIES	GROWTH WITHOUT SUFFICIENT INFRASTRUCTURE X3	AIRPORT DEVELOPMENT	PRESERVING ICONIC FEATURES, GREEN SPACES
WANAKA AIRPORT	BORE - TAKING TOO LONG X2	SILVERLIGHT & IT'S EFFECT X2	STREETSCAPES ON MAIN STREET	TOWN PLANNING
REDUCED LAND SECTION SIZE	DEVELOPMENTS	DEVELOPERS ADVERTISING LOCAL SWIMMING HOLE	RESTRICT INTENSIFICATION OF HOUSING, KEEP SECTION SIZES LARGE, RETAIN RURAL VILLAGE FEEL	PLANNING AROUND CAMPGROUND FACILITIES AT RED BRIDGE - COOKING, SHOWERS
RETAIN RURAL VILLAGE FEEL	KEEP OUR LUGGATE SIMPLE - WE DON'T WANT OUR LITTLE VILLAGE TO FEEL LIKE A HUSTLE & BUSTLE TOWN - KEEP IT SIMPLE	OVERCROWDING	HOW TO MANAGE GROWTH	TOWN PLANNING X2
AFFORDABLE HOUSING TO BUY OR RENT	INDUSTRIAL AREA	RELATIONSHIP BETWEEN WANAKA & TARRAS AIRPORT	MORE SECTIONS/ SUBDIVISIONS X2	BETTER ZONING - LIGHT INDUSTRIAL
IS THERE ENOUGH INFRASTRUCTURE TO SUPPORT THE LAKE MCKAY SUBDIVISION?	NO WANAKA AIRPORT EXPANSION X3	HOW WILL LUGGATE BE AFFECTED BY TARRAS AIRPORT	TOO MANY ROADWORKS	SERVICES TO SUPPORT GROWTH
BUILDING ON FLOODPLAIN	PRESERVE THE ICONIC	RESIDENTIAL OVERGROWTH	STREET LIGHTING	

AREAS - PREVENT THIS HAPPENING, PUT RECREATION AREAS THERE INSTEAD	FEATURES - RED BRIDGE, OLD FLOUR MILL, GREEN SPACES, RESERVES, WALKWAYS			
--	---	--	--	--

BIG ISSUES - ENVIRONMENT

BETTER AWARENESS - LANDSCAPE/COUNTRY ATMOSPHERE X2	WATER SUPPLY & SEWAGE X5	MONITORING POLLUTION OF WATERWAYS	DRINKING WATER - DAIRYING	PEST CONTROL - RABBITS, FERRETS X10
WATER RESTRICTIONS - DEVELOPERS	SEWAGE X3	CONSISTENT LIGHTING/DARK SKY X2	WATER, SAFE SUPPLY	CLIMATE CHANGE, FIRE RISK CONSIDERATIONS
LACK OF WATER X3	GREEN SPACES X2	DOG POO BAGS/DOG POO EVERYWHERE X2	WATER SUPPLY THAT WAS PROMISED	SOLAR CENTRE
LUPINS - INTRODUCED ALONG CREEK = BAD	WATER RESTRICTIONS - DEVELOPERS RESPONSIBLE FOR WATER STORAGE	WATER CHLORINATION	SAFE, SECURE WATER SUPPLY	MORE PLANTING ALONG RIVERBANKS & SURROUNDS
IMPROVED WATER QUALITY IN CREEKS - DEAD HORSE & LUGGATE	PLANT MORE TREES	PINE TREES BLOCK THE VIEW	MONITORING OF FERTILISER - POLLUTION TO WATERWAYS	CHLORINE IN THE WATER
COLON CANCER PROBLEMS	NITRATES RUN OFF	WATER RESTRICTIONS IN SUMMER X2	LOSING OUR RURAL BEAUTY	POTENTIAL FLOOD PROBLEMS FROM INADEQUATE STORM WATER PLANNING & NUMEROUS REAL ESTATE DEVELOPMENTS
EUCALYPTUS ON DOMAIN -	PUBLIC RUBBISH BINS &	WATER STORAGE ISSUES	PROTECTION FROM	IRRIGATION

TOO TALL & NON-DECIDUOUS, CAUSES WINTER SHADING ON SOLAR PANELS	DOG POO BINS & SOMEONE TO EMPTY/MAINTAIN THEM		DEVELOPMENT	
MAKE THE ENVIRONMENT ATTRACTIVE & IMPROVE STREET APPEAL	WASTE MANAGEMENT	FAST TRACK INFRASTRUCTURE - WASTE WATER/ PORTABLE WATER	WATER RUN OFF FROM LAKE MACKAY SUBDIVISION	DELAYS IN UPGRADES TO WATER INFRASTRUCTURE
SEWAGE - SEPTIC TANKS	WATER RESTRICTIONS & LACK OF FUNDING	CLIMATE ISSUES COMPOUNDING ON OTHER ISSUES - FLOODS, DROUGHT, FIRE	LIGHT POLLUTION	DEPENDABLE DRINKING WATER
WATER FOR DAIRYING - WINTERING	SEWAGE - OLD LUGGATE			

BIG ISSUES - COMMUNITY

RECREATIONAL FACILITIES FOR KIDS, NO PLAYGROUND X5	GOOD COFFEE SHOP X4	COMMUNITY CENTRE (NOT THE HALL) - SOCIAL HUB X2	SPORTS FACILITIES	TEEN FACILITIES X3
NO VILLAGE CENTRE	SCHOOLING - LOCAL AT LUGATE/FLAT PRIMARY & SECONDARY X3	MAKE HALL MORE ACCESSIBLE - LOWER HIRE RATES, MORE COMMUNITY EVENTS,	EXPENSIVE TO HIRE THE HALL, LOCALS RATES X2	PUB X6
SMALLER SUPERMARKET/4 SQUARE, LACK OF COMMERCIAL SHOPS X12	LARGER FIRE-STATION	NO CAFE X4	MORE FACILITIES - SPORTS, PRE-SCHOOL, SWIMMING POOL, PLAYGROUNDS, TENNIS COURT, BASKETBALL COURT, SKATE PARK,	LOCAL CONTROL OF HALL (SCOUTS, PLAYGROUP)

			BIKE/PUMP TRACK X8	
SCHOOL CHOICE SHOULD BE OPTIONAL - HAWEA, TK, WPS X2 WORRY AT THE SCHOOL MOVING FURTHER AWAY	CONTINUE THE LOCAL BADMINTON & TABLE TENNIS SESSIONS	REBUILD THE PLAYGROUND X3	SMALL JETTY ON DEAD HORSE CREEK OFF COOPER CRES	FISHING, HUNTING & ACCESS TO RIVERS & MOUNTAINS
MEDICAL CLINIC X2	LACK OF VILLAGE AMENITIES	SELF RELIANCE	KINDY/PRE-SCHOOL X2	PUBLIC SPACES
COMMUNITY INVOLVEMENT - NEW MEMBERS/ COMMITTEES & WORKING GROUPS	CLEAN UP GRAFFITI UNDER THE BRIDGE	DOC RESERVE ACCESS	MAKE THE CAMPGROUND FAMILY FRIENDLY - DERELICT	MAKE LUGGATE MORE DESIRABLE FOR SHOPPERS, TOURISTS & DAYTRIPPERS
GOLF COURSE	TIDY UP THE AREA OPPOSITE THE PUB	MAKE AREA WHERE UPPER CLUTHA TRANSPORT IS NOW, INTO A TOWN PRECINCT ASAP	SAFETY FOR CHILDREN TO CROSS MAIN ROAD - FOOTPATHS /CROSSINGS X2	KEEP THE COMMUNITY FEELING - NOT LETTING LUGGATE TURN INTO A TRANSIENT PLACE
SHARED WORKING HUB	BEAUTIFICATION - NO HANGING BASKETS			

BIG ISSUES - OTHER

FEWER VOLUNTEERS	DOGS	NO FB VOLUNTEERS	CROMWELL POST	FUN FACT: USED TO BE A POPULAR HOLIDAY DESTINATION - NOT JUST A SUBURB OF WANAKA) FOR THE WALKING, THE CREEK & NATURE
------------------	------	------------------	---------------	---

PAIN'T THE BRIDGE RED X2	INCOME FROM FREEDOM CAMPERS	SEPARATE UPPER CLUTHA FROM QLDC	POSTAL ADDRESSES COMBINED - RD2 OR 3? I.E. CROMWELL/WANAKA	LONG TERM CAMPERS ON THE MAIN ROAD AT THE CAMPGROUND - NOT A PRETTY SIGHT
--------------------------	-----------------------------	---------------------------------	--	---

APPENDIX 2 WHAT WE VALUE: TRANSCRIPTION OF FLIP CHARTS

WHAT WE VALUE - TRANSPORT

EASY ACCESS	WALKING TRACKS X4	CYCLING	TRAMPING	RIVER ACCESS
NO BIG AEROPLANES FLYING OVER EVERY 20 MINS	DOC LAND NEARBY FOR WALKS & RIDING	RED BRIDGE	ACCESS TO OUTDOORS - CYCLEWAYS, WALKING	ACCESSIBLE BIKE TRACKS
EASY ACCESS TO SWIM HOLES				

WHAT WE VALUE - DEVELOPMENT

AVIATION HUB X2	PEACE & QUIET X3	HISTORIC AREAS	INDUSTRIAL AREA PRESERVED	RETAIN HISTORY/HISTORIC SITES/BUILDINGS BUT NOT TO SLOW PROGRESS - PLANNED WELL
HILLS NOT COVERED WITH HOUSES	LARGER PLOT SIZES X3	HERITAGE BUILDINGS - PUB/FLOUR MILL & REMAINS OF OLD GOLD MINING ETC X2	SMALL TOWN VIBE	AFFORDABLE

WHAT WE VALUE - ENVIRONMENT

HEALTHY BIODIVERSITY	LUGGATE CREEK X3	THE WEATHER X2	SPACIOUS X2	SMALL TOWN
RIVER X2	DARK SKY X3	GREEN WASTE X2	GARDENS	LANDSCAPE/NATIVE SPACES
BIRD SONG	WILD SPACES	ENVIRONMENT - MOUNTAINS, RIVERS	BEING ABLE TO SEE THE STARS	GREEN SPACES X3
THE VIEWS - SEEING THE RIVER & THE MOUNTAINS	NATURAL ENVIRONMENT	A PORTAL TO NATURE	THE NOOK	NATURAL FEATURES
ACCESS TO OUTDOOR				

WHAT WE VALUE - COMMUNITY

SENSE OF COMMUNITY X3 - SUPPORTIVE/ WELCOMING	VOLUNTEERS	COMMUNITY FEEL X3	GREAT COMMUNITY X2	SWIMMING HOLE X4
COMMUNITY SPIRIT	SKIING	ACTIVE COMMUNITY BOARD	COMMUNITY WORK/PROJECTS	COMMUNITY ASSOCIATION & EVENTS - BONFIRE NIGHT, CHRISTMAS X4
UNPRETENTIOUS/ RELAXED X2	LILLIPUT LIBRARY	FRIENDSHIPS	WOODYSTOCK X4	LOCAL BUSINESS CONTRIBUTIONS (UPPER CLUTHA TRANSPORT)
LADIES LUNCHESES & MENS COFFEE GROUP	LESS WANKAS PER CAPITA THAN THE REST OF QLDC	CREDIT TO PRE-SUBDIVISION RESIDENTS	FRIENDLY ATMOSPHERE	WE VALUE OUR NEIGHBOURS
SAFETY & SECURITY X3	FAMILY	CARING ENVIRONMENT X2	LUGGATE CRICKET	B.I.G FISHING COMPETITION

			GROUND/CLUB	X2
WARBIRDS	GOOD COMMUNITY CHANNELS - COULD BE RECONCILED	GOOD COMMUNITY CLUBS DEVELOPING - PLAYGROUPS, COMMUNITY SPORTS	SHARED VALUES - NOT A TOURIST TOWN	

WHAT WE VALUE - OTHER

FIRE BRIGADE X4	LUGGATE IS NOT FANCY - WE LIKE IT LIKE THAT	VOLUNTEERS	LOVE OUR CART HORSES	DOCUMENTED LOCAL HISTORY - 2 RECENT BOOKS
FAMILY HISTORIES				

APPENDIX 3 WHAT WE'D LIKE TO SEE: TRANSCRIPTION OF FLIP CHARTS

WHAT WE'D LIKE - TRANSPORT

ACCESS TO SWIMMING HOLES X2	DIRT TRACKS	TRAFFIC MANAGEMENT	PROTECT ACCESS TO OUTDOOR FACILITIES	FINISH THE RED BRIDGE
EASY ACCESS TO WALKS, RIVERS & NATURE X2	TRACKS - UPKEEP & MAINTENANCE OF TRACKS FOR SAFE BIKING & WALKING	LINKED TRACKS/EASY ACCESS WAYS	BEING ABLE TO WALK/RIDE FROM RED BRIDGE & RIVER TRAILS, SWIMMING HOLES TO LUGGATE TOWN & LINK IN EAST LUGGATE WITH FOOTPATHS	RIVER TRACK & OTHER WALKING TRACKS X2
WALKWAY/BIKE TRACK ACROSS RED BRIDGE X2	TRACK MAINTENANCE	RESTORE & PRESERVE THE RED BRIDGE (WEIGHT LIMIT) X2	ENGINE BRAKING RESTRICTIONS (NOISE)	RESTRICT COMMERCIAL ACTIVITY FROM AIRPORT COMING THROUGH LUGGATE (RENTAL CARS)

PUBLIC TRANSPORT	WALKING & CYCLING TRACKS	MAINTENANCE OF WALKING TRACKS & CYCLING TRAILS		
------------------	--------------------------	--	--	--

WHAT WE'D LIKE - DEVELOPMENT

SYMPATHETIC ? OF OLD TRANSPORT SIGHT	INFRASTRUCTURE TO SUPPORT GROWTH	TOWN CENTRE/ CENTRALISED PLACES TO MEET, BE, SOCIALISE X3	SMALL TOWN - STOP THE SPREAD	RETAIN HISTORY/HISTORIC SITES/BUILDINGS BUT NOT TO SLOW PROGRESS - PLANNED WELL X3
RECYCLE CENTRE	SITES OF SIGNIFICANCE - HERITAGE & HISTORY	SET TOWN LIMIT TO LIMIT SPRAWL	OLD UCT SITE	RESTRICT COMMERCIAL ACTIVITY - AIRPORT
PARKS, NOT HOUSING				

WHAT WE'D LIKE - ENVIRONMENT

CLEAN UP DEAD HORSE CREEK X2	IMPROVE SWIMMING HOLES X2	QUALITY URBAN AREAS	SYMPATHETIC DEVELOPMENT OF PRECINCT - OLD UPPER CLUTHA SITE	COMMUNITY GARDEN X4
RURAL OPEN SPACES	KEEP THE CREEK HEALTHY - TREASURE IT	AESTHETICS OF FLOUR MILL & PUB BUILDINGS	HEALTHY BIODIVERSITY OF NATIVE & NON-NATIVE VEGETATION, GREEN CORRIDORS FOR BIRD LIFE	FINISH TIDYING UP THE FREEDOM CAMPING AREA
SWIMMING HOLES & CLEAN WATER X2	GREEN WASTE FACILITY	GET THE ALGAE OUT OF THE RIVER	EXTENSIVE STORM WATER PLAN - BUILD A LAKE - USEFUL FOR FLOOD TIMES, FIREFIGHTING & GROWING FISH	LOCAL RECYCLING OF BUILDING MATERIALS

HAVE A FIREWOOD DRIVE - CUT DOWN THE EUCALYPTUS IN THE DOMAIN & REPLANT WITH KOHAI, HAZELNUT, ALMONDS, EDIBLE CHESTNUTS	EXPAND THE STRAWBERRY FARM TO INCLUDE VEGES WHERE WE CAN GET OUR FOOD LOCALLY	AREAS ON FLOODPLAINS SHOULD BE USED FOR RECREATION/PARKS, NOT FOR HOUSING X2	CLEAN WATER X2	SUFFICIENT WATER FOR ALL HOUSES & GARDENS
PROTECT DARK SKY	A GOOD WATER SUPPLY	PLANT FRUIT TREES IN THE PARK	WATER LIMITS	

WHAT WE'D LIKE - COMMUNITY

KEEP THE COMMUNITY FEEL	CHILDCARE FACILITY X5	MEDICAL CENTRE x3	MEETING PLACES	TENNIS COURTS
SPORT & REC FACILITIES X4	DOG PARK X3	POOL/SWIMMING HOLE X2	WELCOMING PUB WITH GOOD OPENING HOURS X6	SHOP/LOCAL RETAIL
CAFE X4	COMMUNITY HUB X2	IMPROVE AREAS LIKE FRISBY GOLF	PUMP TRACK/ SKATE PARK X3	PRESERVE A SENSE OF COMMUNITY
WANAKA LIBRARY BRANCH IN LUGGATE	OUTDOOR ACTIVITIES - WALK, BIKE, PADDLE, SWIM	LOCAL SPORTS	COMMUNITY PANTRY X2	BREWERY/WINE BAR
BAKERY	EASIER FREE ACCESS FOR THE COMMUNITY HALL	TENNIS COURT X2	MORE COMMUNITY EVENTS X3	MARKETS
WELLBEING RESOURCES/ EXPERTISE	RESOURCE DIRECTORY	SHARING OF SKILLS	CHILD FRIENDLY ACTIVITIES	AFFORDABLE ACCESS TO COMMUNITY HALL X2

WHAT WE'D LIKE - OTHER

I DON'T KNOW, I'M TOO OLD FOR THAT SHIT	HALL TO BE ABLE TO OFF GRID, TO HELP IN AN EMERGENCY	REMOVE RURAL DELIVERY FOR POSTAL	EMERGENCY OPERATIONS CENTRE	COMMUNITY CIVIL DEFENCE
FUNDING - HISTORICAL INFORMATION BOARDS	TE RUA TUPAPAKU = LUGGATE CREEK	FIREWOOD DELIVERY	HISTORIC WALKS/STORY BOARDS	INFORMATION SHARED ABOUT LUGGATE'S HISTORY